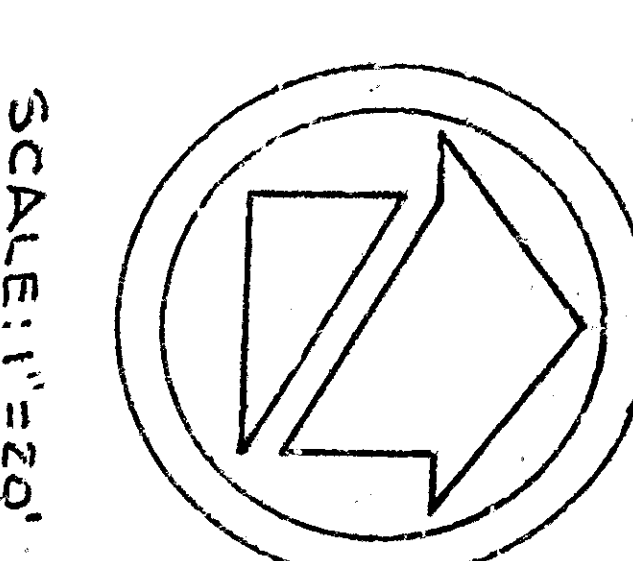
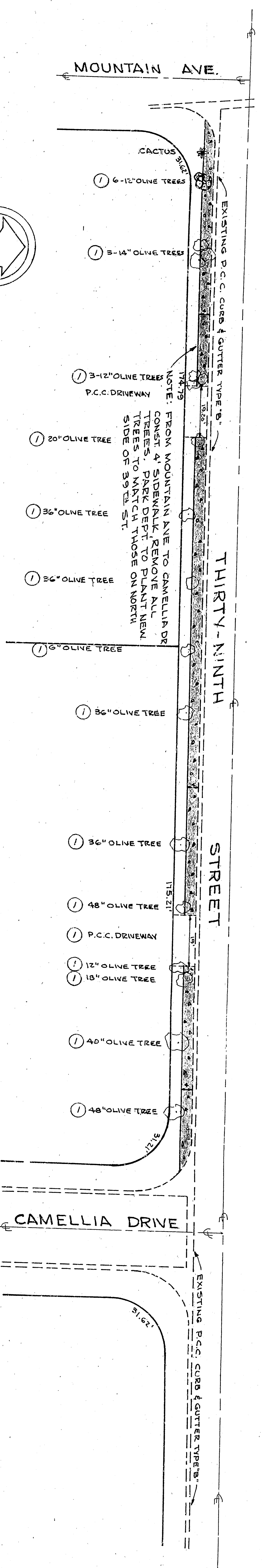
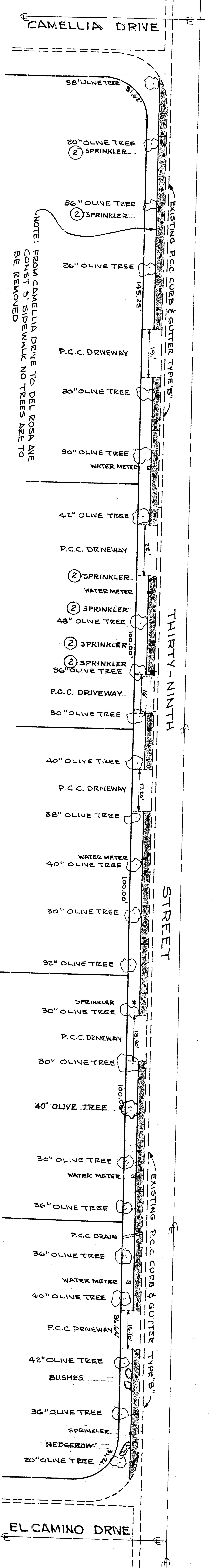


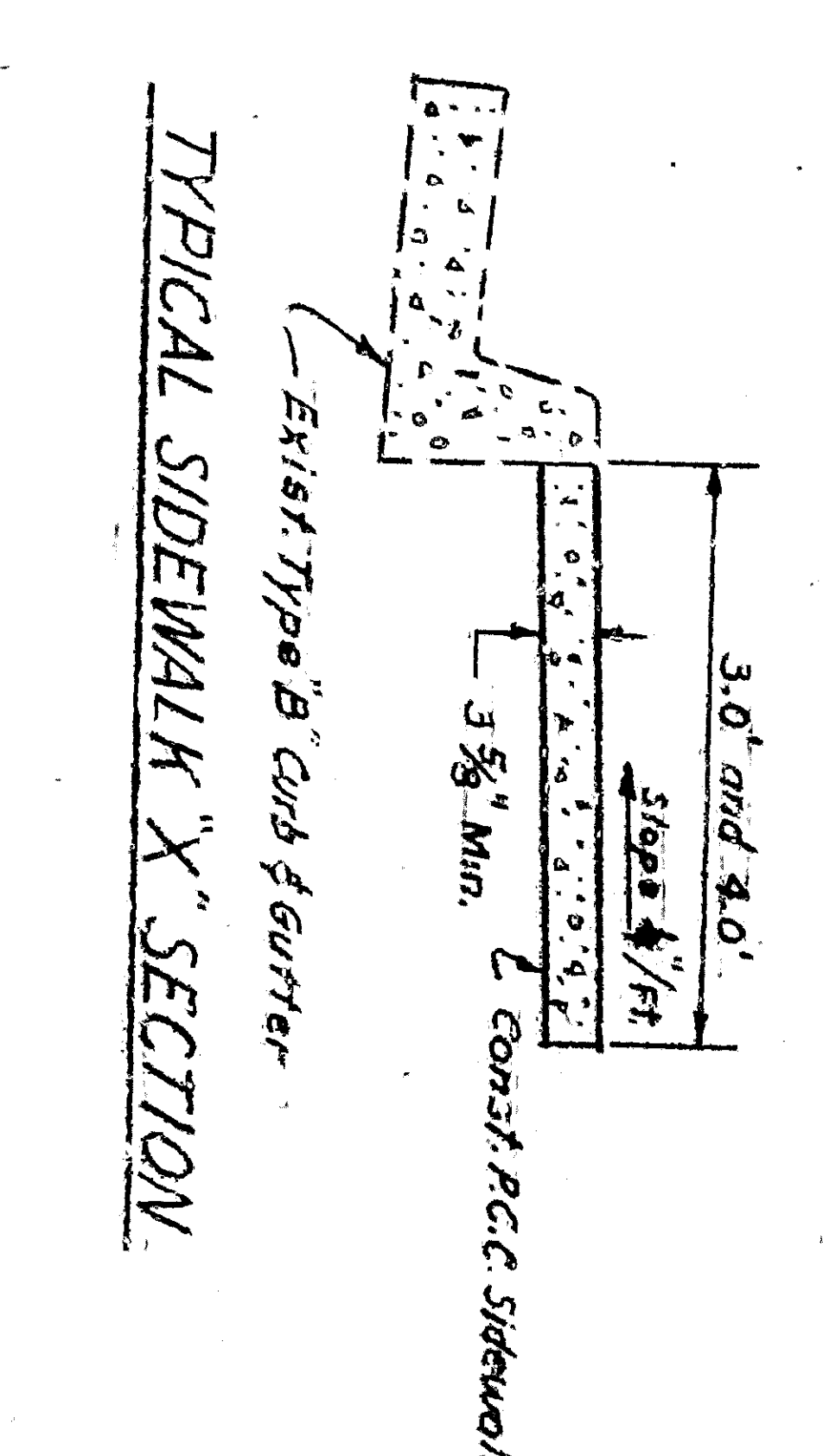
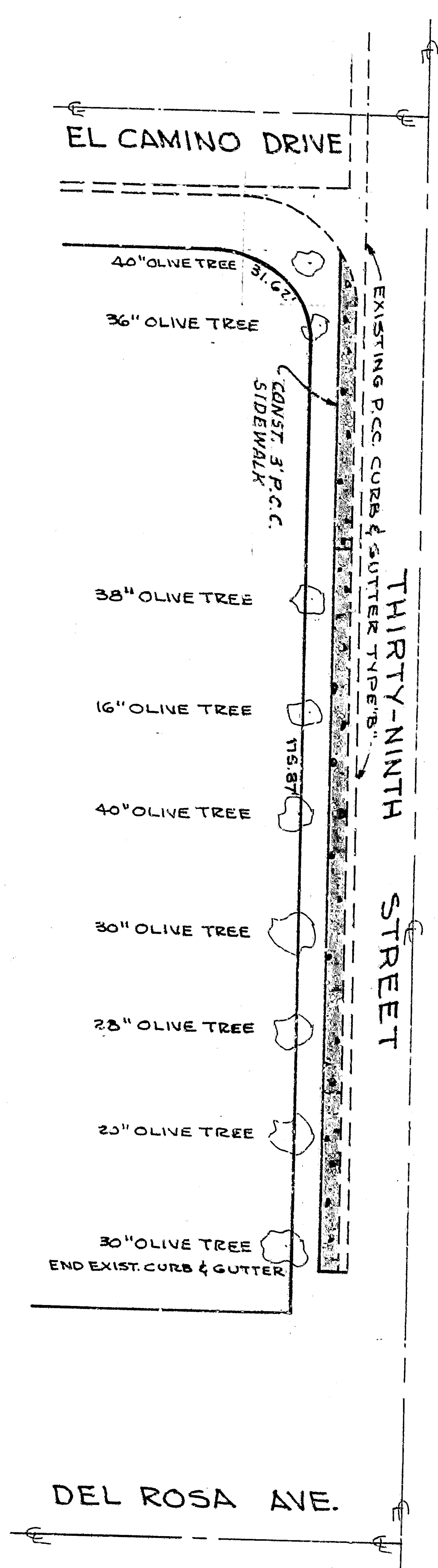
**GENERAL NOTES**

- All work completed within this drawing is to be done in accordance with applicable provisions of Standard Specification for Standard Drawing No. 2331 on file in the Office of the City Engineer.
- Tree to be removed.
- Sprinkler to be removed.
- Total sq. ft. of P.C.C. sidewalk = 3330.



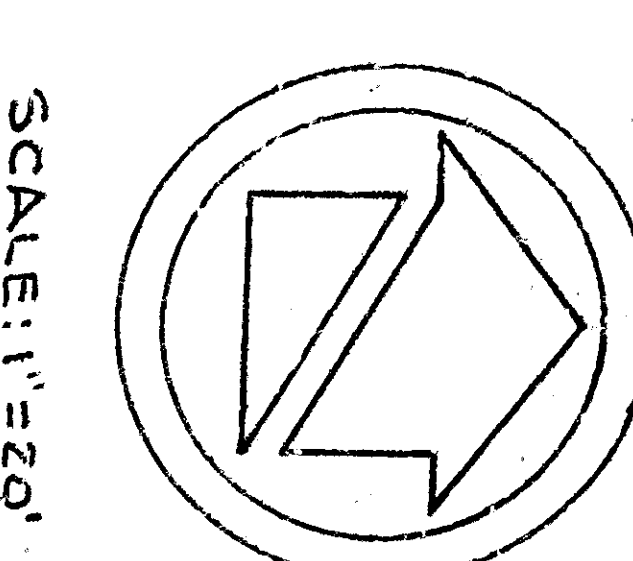
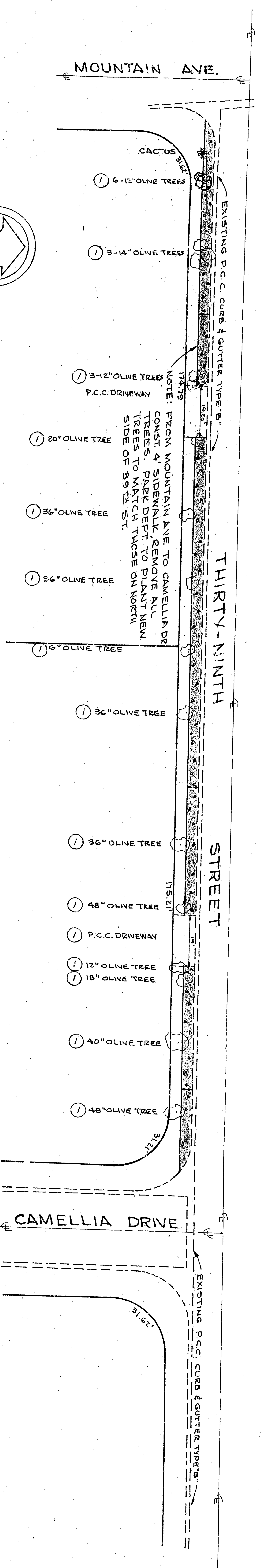
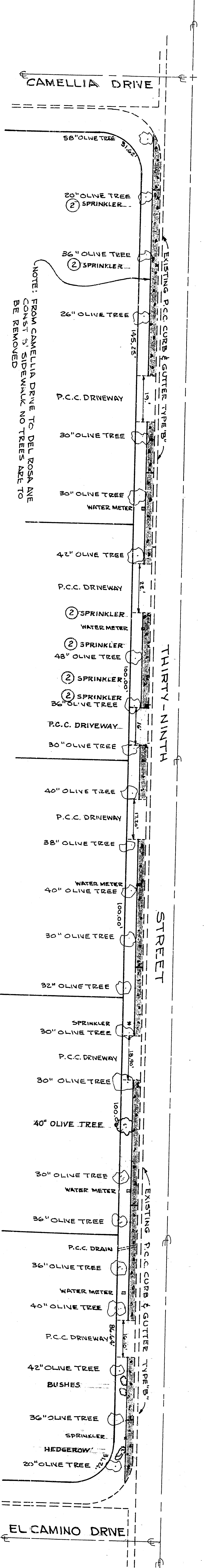
SCALE: 1" = 20'

Approved: <i>[Signature]</i> 2/2/65 REGISTERED CIVIL ENGINEER No. 22452 CITY ENGINEER	Checked: <i>[Signature]</i> 2/2/65 REGISTERED CIVIL ENGINEER No. 22452 CITY ENGINEER	Prepared: <i>[Signature]</i> 2/2/65 REGISTERED CIVIL ENGINEER No. 22452 CITY ENGINEER
CITY OF SAN BERNARDINO DEPARTMENT OF ENGINEERING THIRTY-NINTH STREET BETWEEN DEL ROSA AVE & MOUNTAIN AVE SIDEWALK		
SHEET 2 OF 2 RECOMMENDED		



**GENERAL NOTES**

- All work completed within this drawing is to be done in accordance with applicable provisions of Standard Specification for Standard Drawing No. 2331 on file in the Office of the City Engineer.
- Tree to be removed.
- Sprinkler to be removed.
- Total 99' fit of P.C.C. sidewalk = 330.



SCALE: 1" = 20'

Approved: <i>[Signature]</i> 2/2/65 REGISTERED CIVIL ENGINEER No. 22452 CITY ENGINEER	Checked: <i>[Signature]</i> 2/2/65 REGISTERED CIVIL ENGINEER No. 22452 CITY ENGINEER	Prepared: <i>[Signature]</i> 2/2/65 REGISTERED CIVIL ENGINEER No. 22452 CITY ENGINEER
CITY OF SAN BERNARDINO DEPARTMENT OF ENGINEERING THIRTY-NINTH STREET BETWEEN DEL ROSA AVE & MOUNTAIN AVE SIDEWALK		
SHEET 2 OF 2 RECOMMENDED		